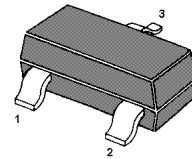
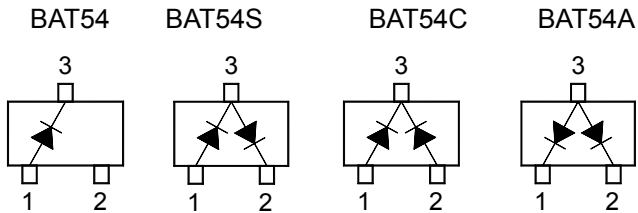


# BAT54 / A / C / S-AH

## Schottky Barrier Diodes



BAT54 Marking Code: **L4**  
 BAT54A Marking Code: **L42**  
 BAT54C Marking Code: **L43**  
 BAT54S Marking Code: **L44**  
 TO-236 Plastic Package

### Features

- AEC-Q101 Qualified and PPAP Capable
- Halogen and Antimony Free(HAF), RoHS compliant

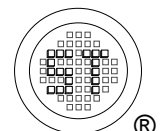
### Absolute Maximum Ratings<sup>1)</sup> ( $T_a = 25^\circ\text{C}$ )

Parameter	Symbol	Limits	Unit
Repetitive peak reverse voltage	$V_{RRM}$	30	V
Average rectified forward current	$I_{F(AV)}$	200	mA
Repetitive Peak Forward Current	$I_{FRM}$	300	mA
Non-repetitive peak forward surge current at Pulse width=1 second	$I_{FSM}$	600	mA
Power dissipation	$P_{tot}$	290	mW
Thermal resistance junction to ambient air	$R_{\theta JA}$	430	$^\circ\text{C/W}$
Junction temperature	$T_j$	- 55 to + 150	$^\circ\text{C}$
Storage temperature range	$T_{stg}$	- 55 to + 150	$^\circ\text{C}$

<sup>1)</sup> These ratings are limiting values above which the serviceability of any semiconductor device may be impaired.

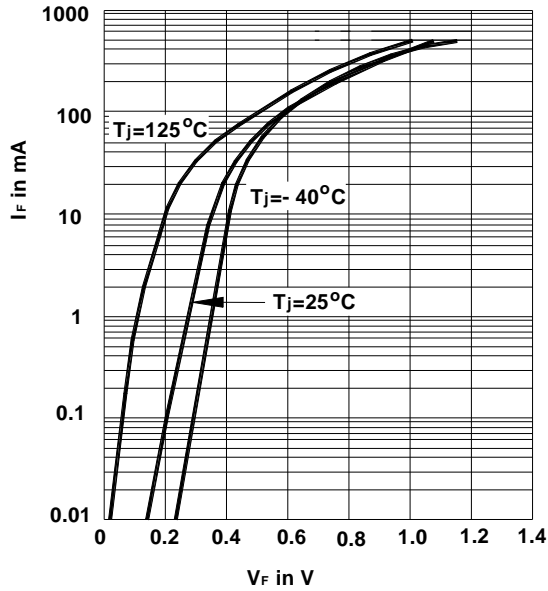
### Characteristics at $T_a = 25^\circ\text{C}$

Parameter	Symbol	Min.	Max.	Unit
Forward voltage at $I_F = 0.1 \text{ mA}$ at $I_F = 1 \text{ mA}$ at $I_F = 10 \text{ mA}$ at $I_F = 30 \text{ mA}$ at $I_F = 100 \text{ mA}$	$V_F$	-	240 320 400 500 800	mV
Reverse current at $V_R = 25 \text{ V}$	$I_R$	-	2	$\mu\text{A}$
Breakdown voltage at $I_R = 10 \mu\text{A}$	$V_R$	30	-	V
Total capacitance at $V_R = 1 \text{ V}$ , $f = 1 \text{ MHz}$	$C_{tot}$	-	10	pF
Reverse recovery time at $I_F = 10 \text{ mA}$ , $I_R = 10 \text{ mA}$ , $I_{RR} = 1 \text{ mA}$ , $R_L = 100 \Omega$	$t_{rr}$	-	5	ns

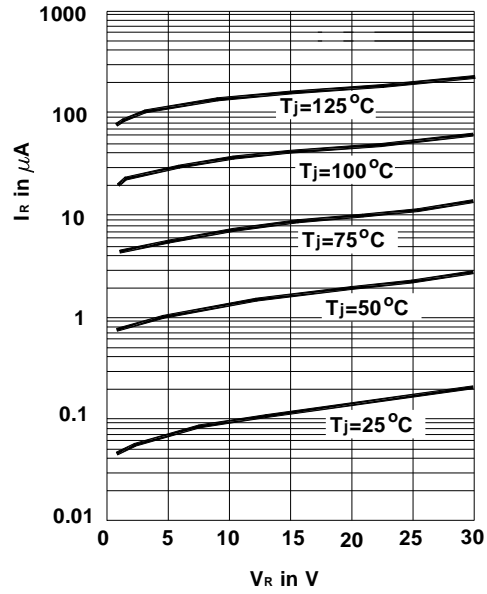


# BAT54 / A / C / S-AH

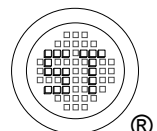
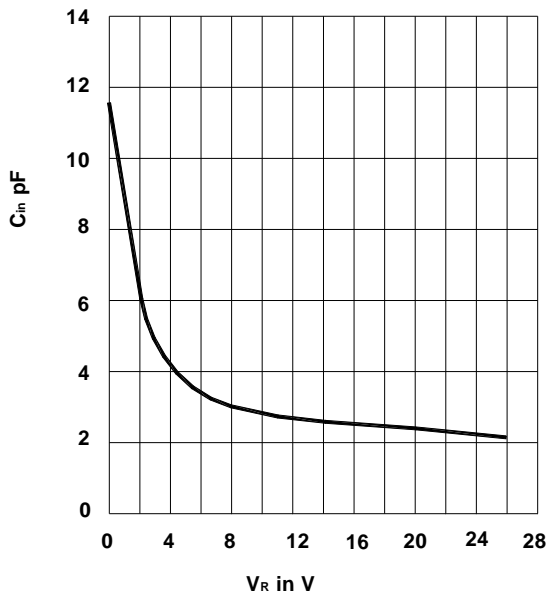
**Typical Forward Voltage  
Forward Current  
at Various Temperatures**



**Typical Variation of Reverse  
Current at Various Temperatures**



**Typical Capacitance vs.  
Reverse Applied Voltage  $V_R$**

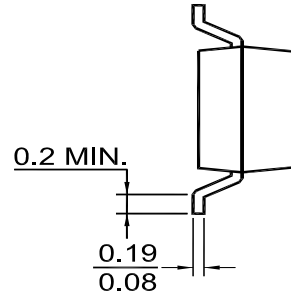
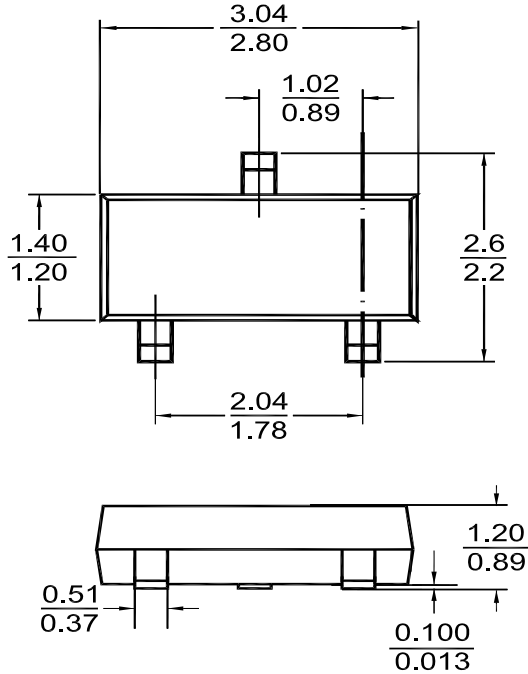


# BAT54 / A / C / S-AH

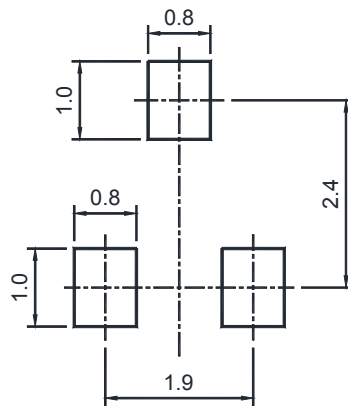
## PACKAGE OUTLINE

Plastic surface mounted package (Dimensions in mm)

TO-236



## Recommended Soldering Footprint



## Packing information

Package	Tape Width (mm)	Pitch		Reel Size		Per Reel Packing Quantity
		mm	inch	mm	inch	
TO-236	8	4 ± 0.1	0.157 ± 0.004	178	7	3,000

